

Public Document Pack

Democratic Services



To: All Members of the Planning Committee

Dear Councillor,

PLANNING COMMITTEE - THURSDAY, 9TH JULY, 2026 , Council Chamber - Epsom Town Hall

Please find attached the following document(s) for the meeting of the Planning Committee to be held on Thursday, 9th July, 2026.

PLANNING OFFICER PRESENTATION SLIDES (Pages 3 - 24)

For further information, please contact democraticservices@epsom-ewell.gov.uk or tel: 01372 732000

Yours sincerely

A handwritten signature in black ink, appearing to read "Sing".

Chief Executive

This page is intentionally left blank

Planning Committee Meeting

9 July 2026

Start time: 7.30pm

Item 1

Declarations of Interest

Members are asked to declare the existence and nature of any Disclosable Pecuniary Interests in respect of any item of business to be considered at the meeting.

Item 2

Minutes of the Previous Meeting

Item 3

26/00572/FUL

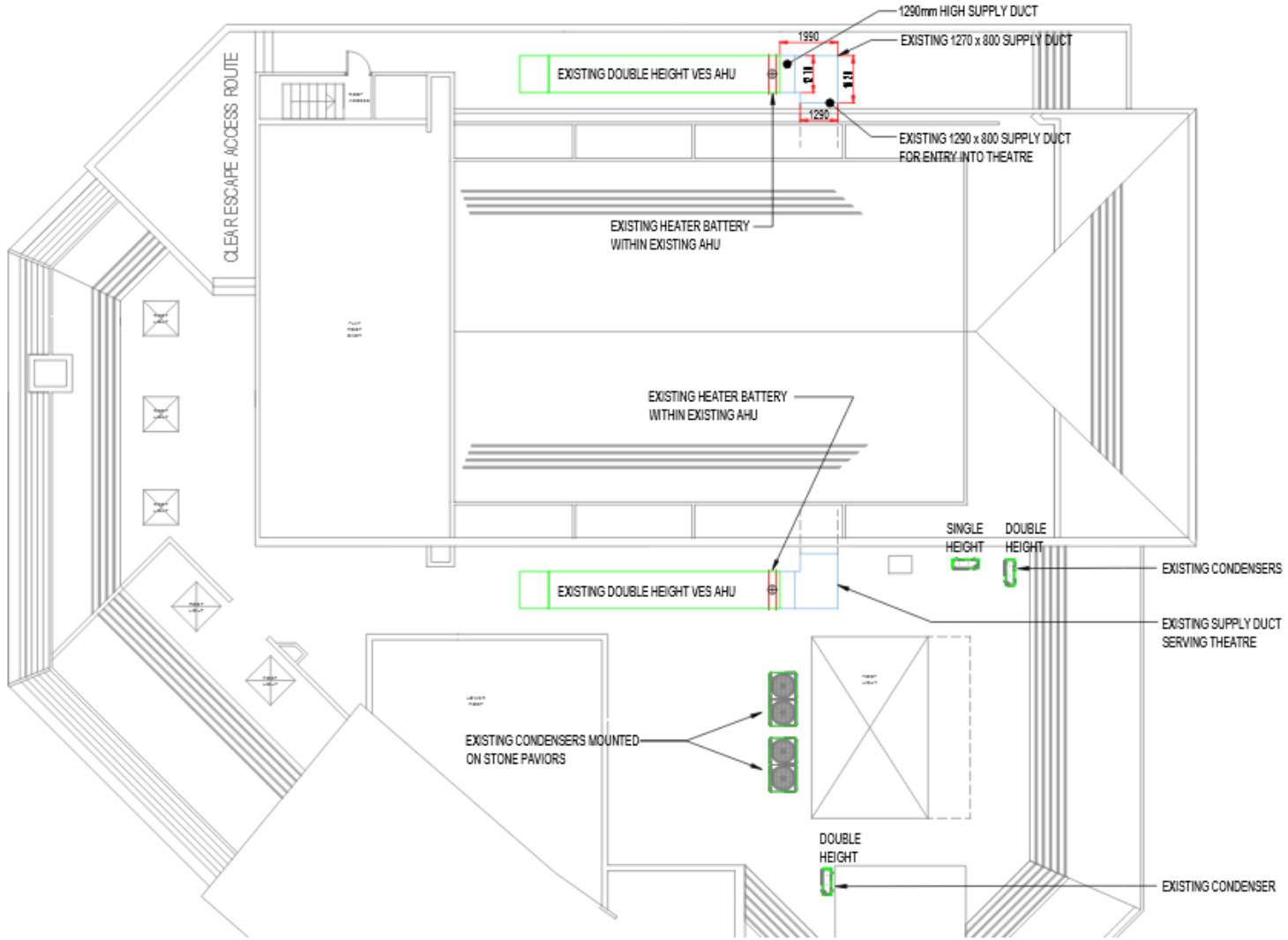
Epsom Playhouse, Ashley Avenue, Epsom KT18 5AL

Replacement of air handling condensers with six heat pumps and four condenser units housed within acoustic panelling

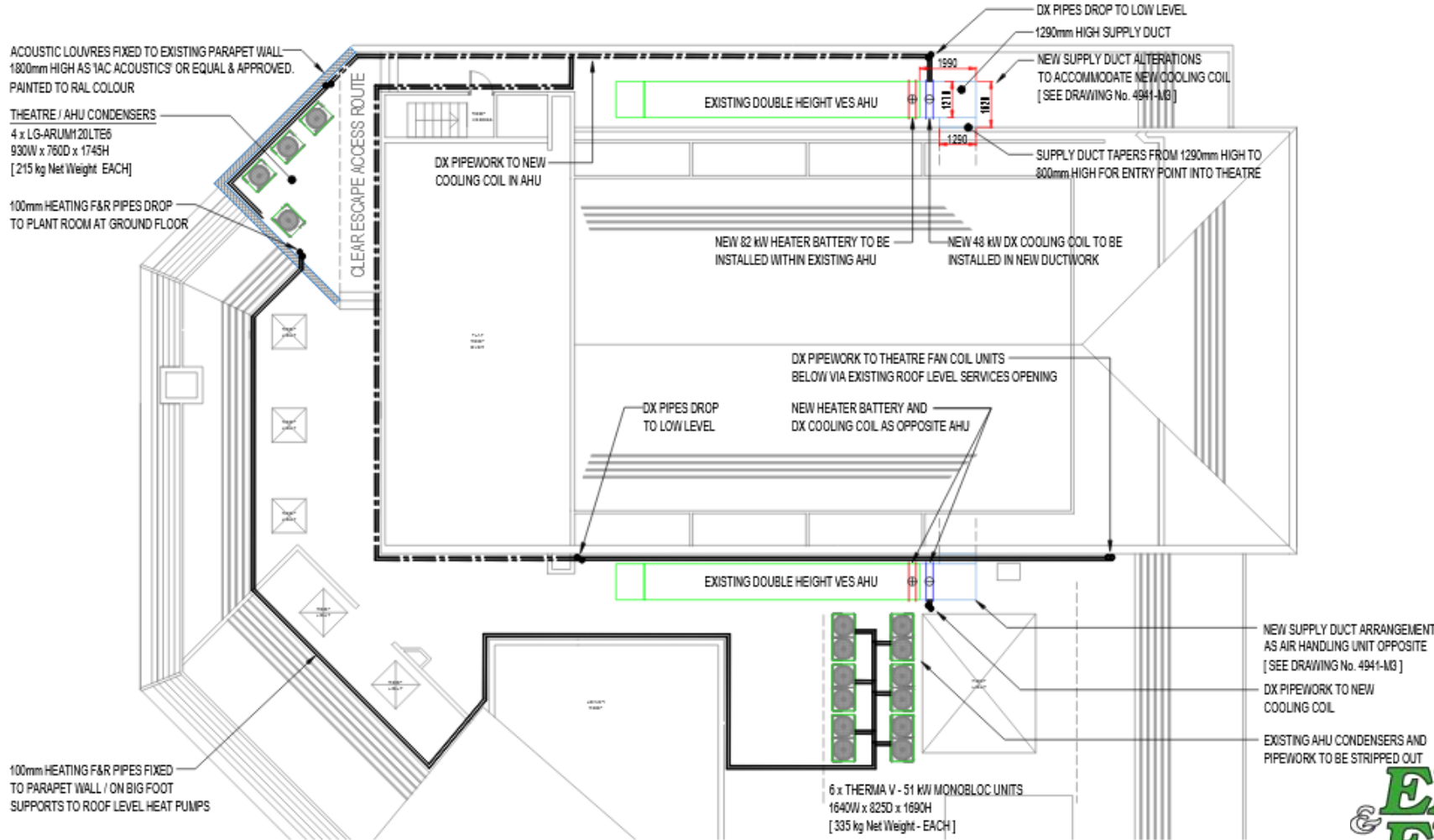
Site Location Plan



Existing Roof Plant

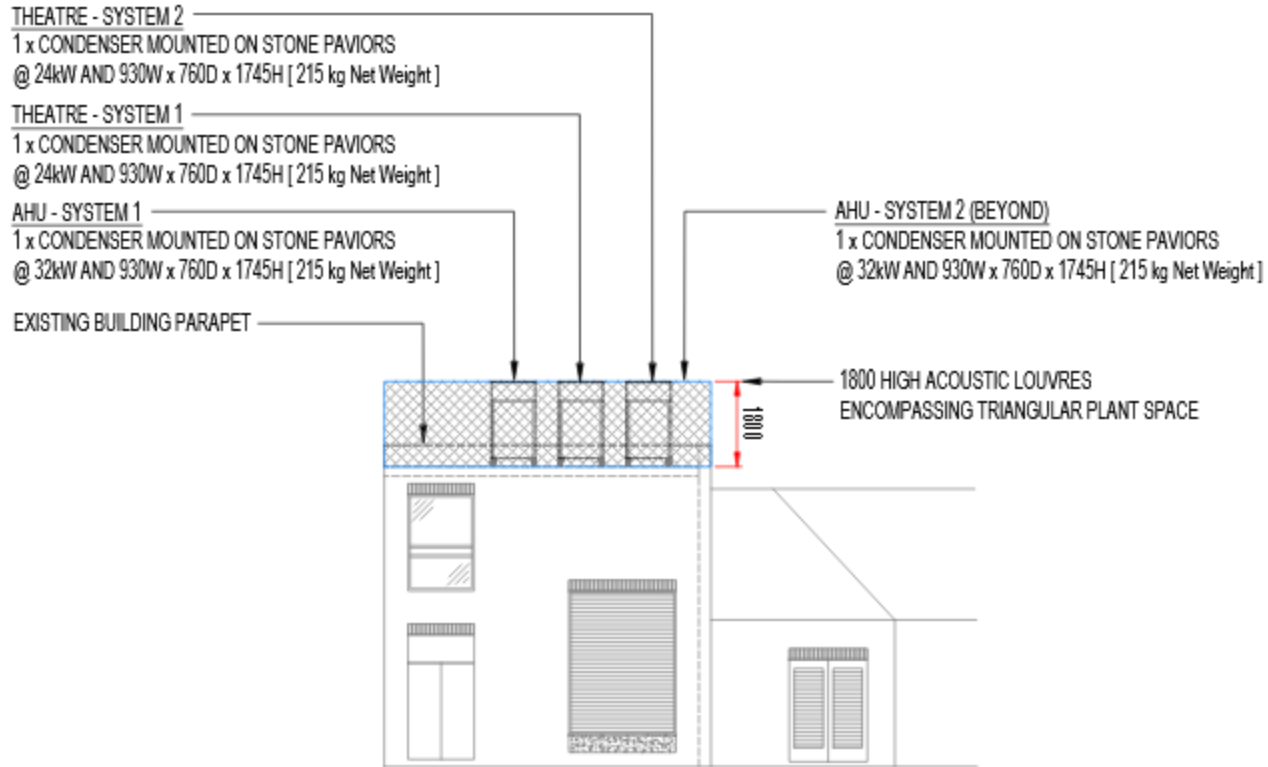


Proposed Roof Plant



Elevation of Condensers

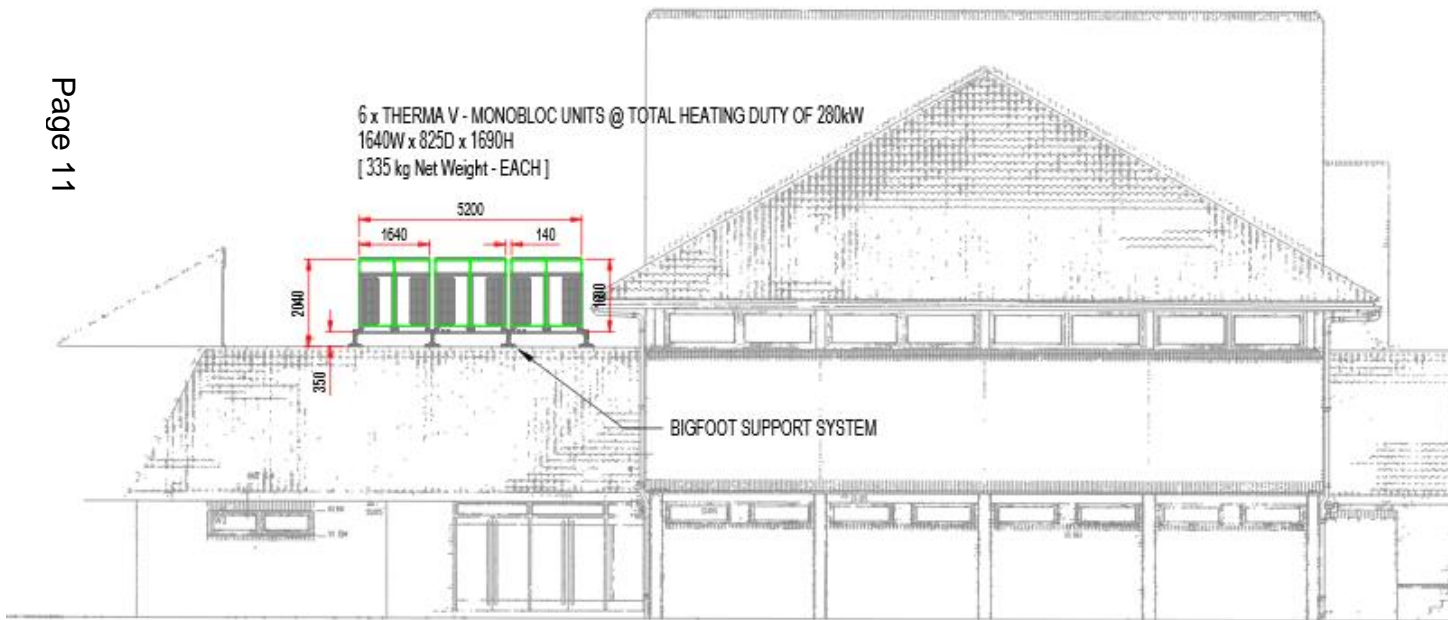
Page 10



Agenda Item 6

Elevation of Air Source Heat Pumps

Page 11



Agenda Item 6

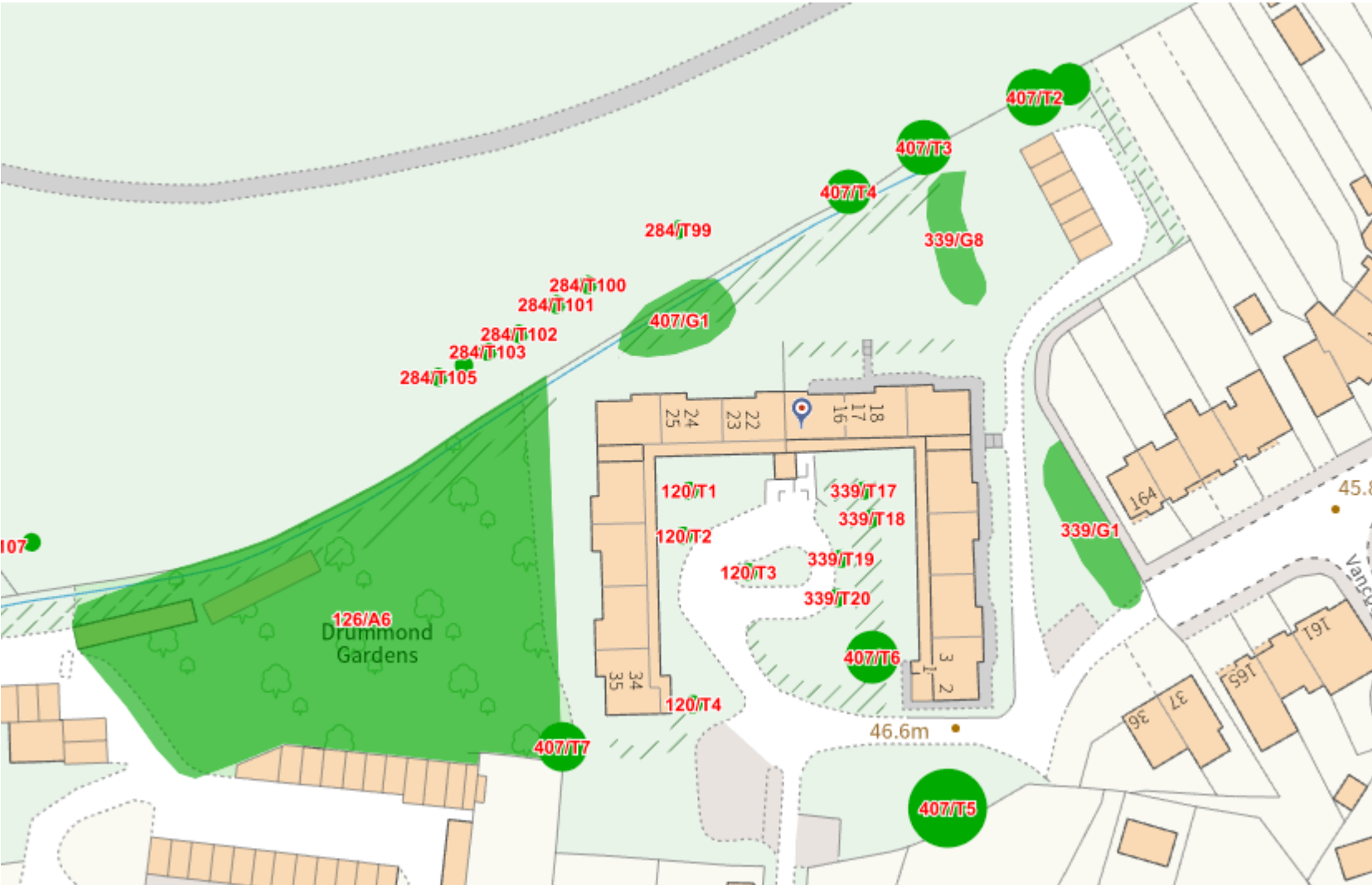
Item 4

25/01132/TPO

Drummond Gardens, Christ Church Mount, Epsom KT19 8RP

Felling of 4 Pedunculate Oaks marked 5, 6, 9 and 12 (within A6 of TPO 126) at Drummond Gardens and felling of 6 Lombardy Poplars marked 20, 21, 22, 23, 24 and 25 (T99-T103 and T105 of TPO) 284 at Long Grove Park

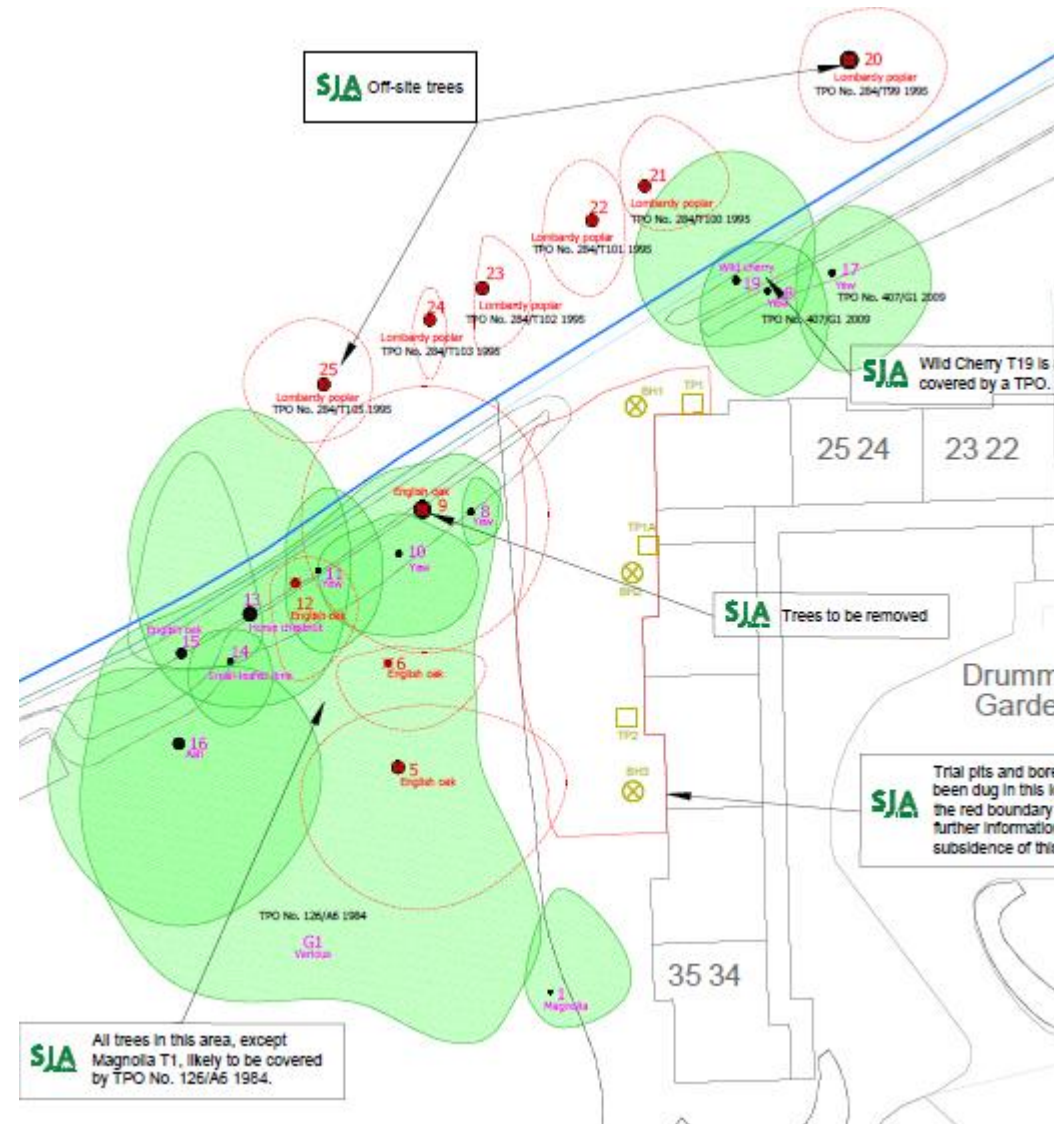
Tree Preservation Orders



Tree Cover



Tree Removal Plan



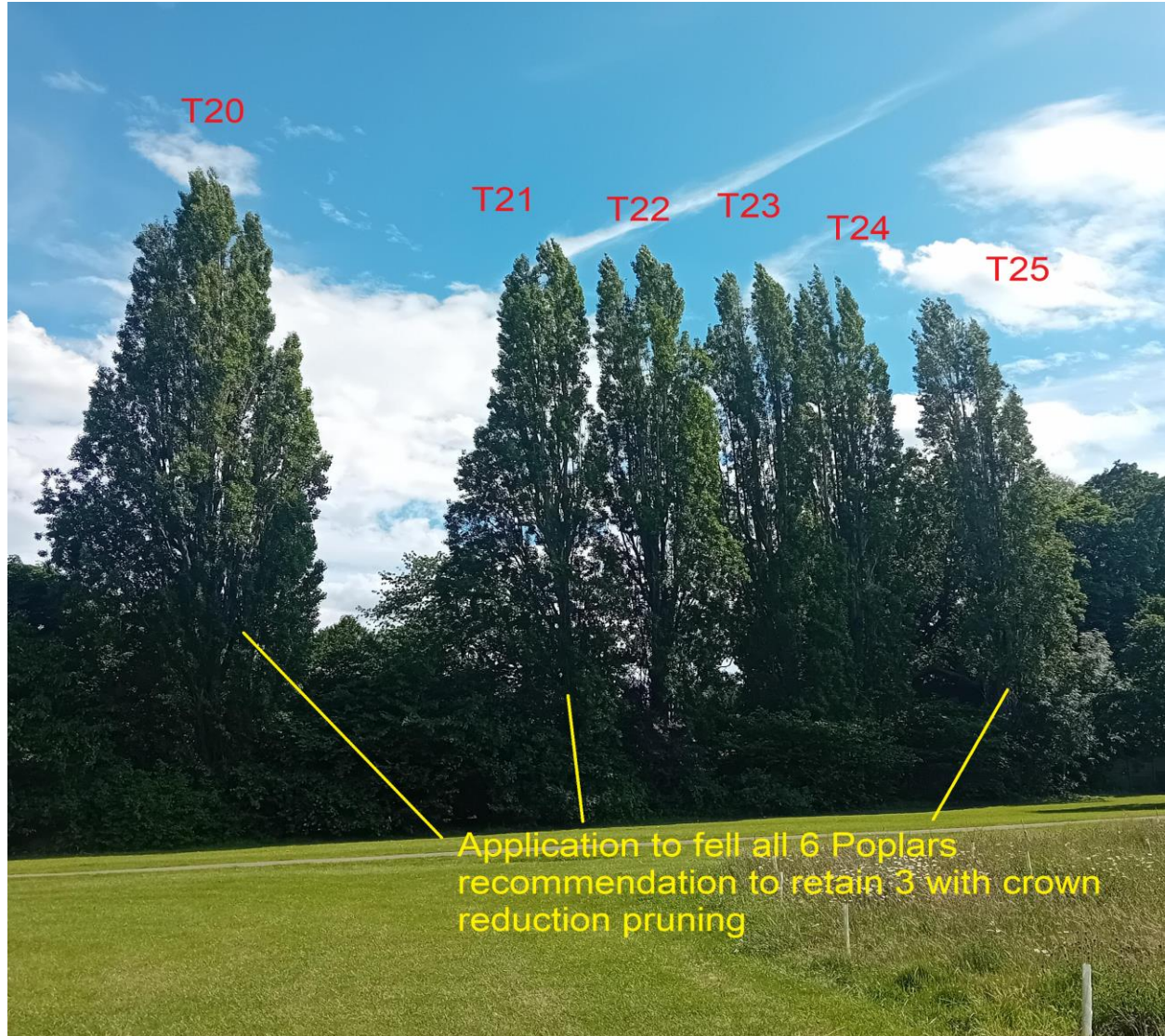
Photo



Photo



Photo



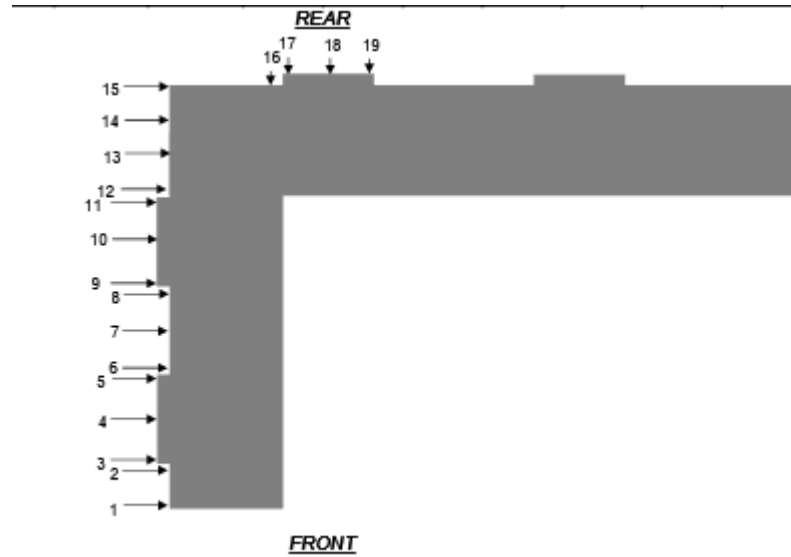
Foundations and Soil

Land Science		Brighton London Bristol		Site		Number	
0845 604 6494 www.landscience.co.uk		Drummond Gardens, Christ Church Mount, Epsom, KT19 8RP		BH1			
Excavation Method		Dimensions		Ground Level (mOD)		Client	
Drive-in Windowless Sampler						William Diffley Consulting Engineers Ltd	
Location		Dates		Engineer		Job Number	
		13/05/2019				LS4256	
Depth (m)		Water Depth (m)		Level (mOD)		Sheet	
						1/1	
Sample / Tests		Field Records		Description		Legend	
0.10	D1			(0.15) 0.15	Grass over dark brown very gravelly slightly sandy SILT. Sand is fine. Gravels are fine to medium subangular to subrounded flints with frequent brick fragments and abundant rootlets. (MADE GROUND)		
0.50 0.50 0.50	HP 82.5kPa D2 V 44.2kPa			(0.55) 0.55	Dark brown CLAY with rare roots. (HEAD DEPOSIT)		
1.00	D3			0.70 (0.60)	Orangish brown slightly gravelly slightly clayey SAND. Sand is fine. Gravels are coarse subangular to subrounded flints. (HEAD DEPOSIT)		
1.50	D4			1.30 (0.35)	Dark brown very clayey GRAVEL. Gravel is medium to coarse angular to subrounded flints. (HEAD DEPOSIT)		
1.80 1.80 1.80 2.00 2.00 2.00	HP 112.5kPa D5 V 132.8kPa HP 137.5kPa D6 V 140.4kPa			1.65 (1.85)	Dark brown mottled grey silty CLAY. (LONDON CLAY FORMATION)		
2.50 2.50 2.50	HP 125kPa D7 V 130kPa			3.00 3.00 3.00			
3.40 3.40 3.40	HP 150kPa D9 V 135.2kPa			3.50	Complete at 3.50m		

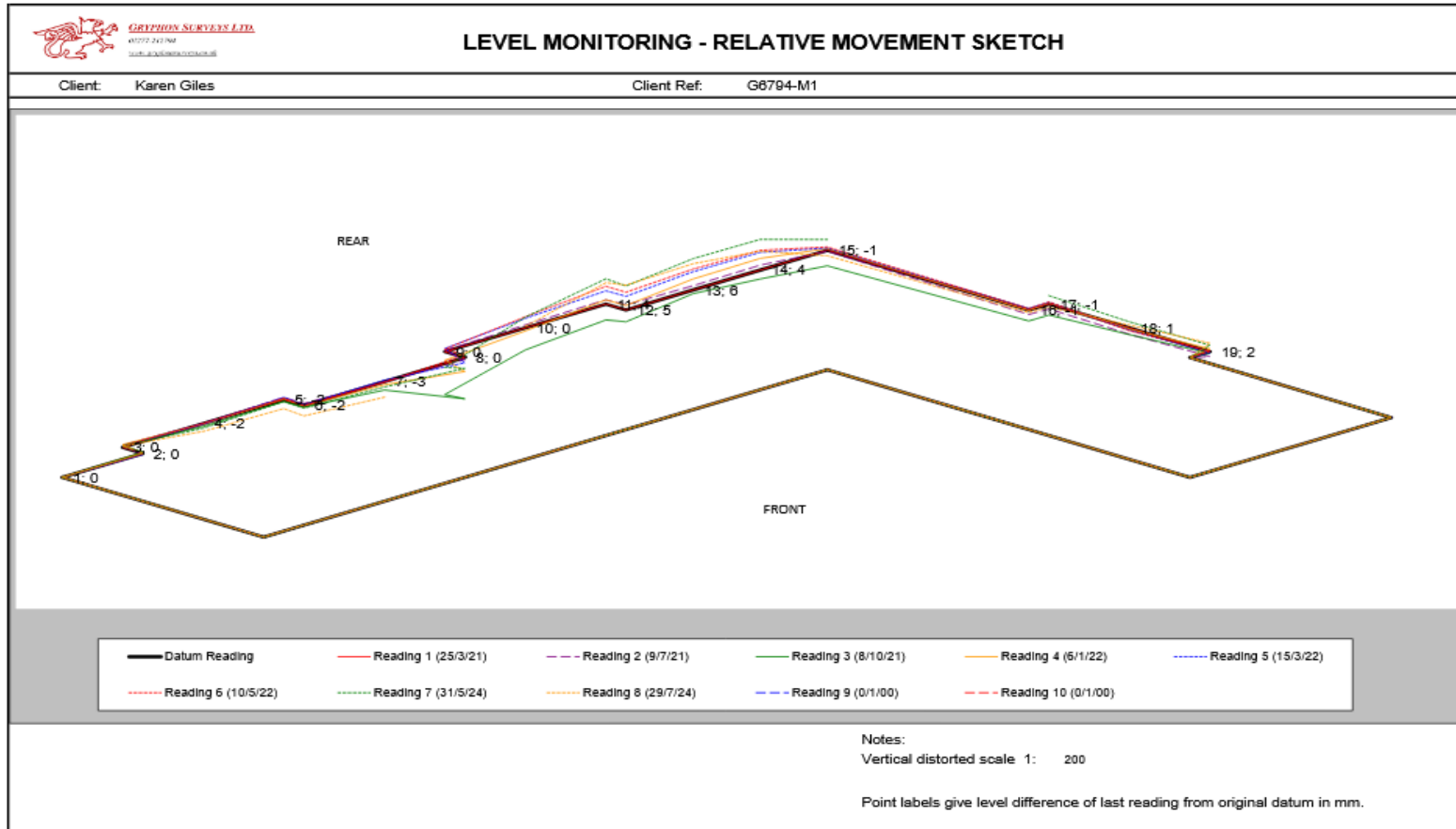
Land Science		Brighton London Bristol		Site		Number	
0845 604 6494 www.landscience.co.uk		Drummond Gardens, Christ Church Mount, Epsom, KT19 8RP		BH2			
Excavation Method		Dimensions		Ground Level (mOD)		Client	
Drive-in Windowless Sampler						William Diffley Consulting Engineers Ltd	
Location		Dates		Engineer		Job Number	
		13/05/2019				LS4256	
Depth (m)		Water Depth (m)		Level (mOD)		Sheet	
						1/1	
Sample / Tests		Field Records		Description		Legend	
0.10	D1			(0.15) 0.15	Dark brown gravelly slightly sandy SILT. Sand is fine. Gravels are fine to medium subangular to subrounded flints with rare brick fragments and abundant rootlets. (MADE GROUND)		
0.50 0.50 0.50	HP 82.5kPa D2 V 72.8kPa			(0.55) 0.55	Orangish brown gravelly CLAY. Gravels are medium to coarse angular to subangular flints. (MADE GROUND) ...Rare roots to 0.40mbgl		
1.00 1.00 1.00	HP 150kPa D3 V 114.4kPa			0.70 (1.00)	...Brick cobbles to 0.65mbgl Orangish brown mottled orange slightly sandy CLAY. Sand is fine. (HEAD DEPOSIT)		
1.50 1.50 1.50	HP 100kPa D4 V 114.4kPa			1.70 (0.15) 1.85	Brownish orange slightly clayey gravelly SAND. Sand is fine to medium. Gravels are medium to coarse angular to subrounded flints. (HEAD DEPOSIT)		
1.80 2.00 2.00 2.00	D6 HP > 225kPa D6 V > 169kPa			2.00 (1.85)	Brown mottled orange grey very silty CLAY. (LONDON CLAY FORMATION) ...Ironstone nodules at 1.85mbgl		
2.50 2.50 2.50	HP 225kPa D7 V > 169kPa			3.00 3.00 3.00	...Rust coloured silt at 2.00mbgl		
3.40 3.40 3.40	HP 125kPa D8 V 145.8kPa			3.50	...Rust coloured silt at 2.90mbgl Complete at 3.50m		

Land Science		Brighton London Bristol		Site		Number	
0845 604 6494 www.landscience.co.uk		Drummond Gardens, Christ Church Mount, Epsom, KT19 8RP		BH3			
Excavation Method		Dimensions		Ground Level (mOD)		Client	
Drive-in Windowless Sampler						William Diffley Consulting Engineers Ltd	
Location		Dates		Engineer		Job Number	
		13/05/2019				LS4256	
Depth (m)		Water Depth (m)		Level (mOD)		Sheet	
						1/1	
Sample / Tests		Field Records		Description		Legend	
0.20	D1			(0.40) 0.40	Dark brown black slightly gravelly slightly sandy SILT. Sand is fine. Gravels are medium to coarse subangular to subrounded flints with abundant rootlets and rare roots. (MADE GROUND)		
0.60 0.60 0.60	HP 50kPa D2 V 57.2kPa			0.80 (0.80)	Orangish brown mottled grey silty CLAY. (HEAD DEPOSIT)		
1.00 1.00 1.00	HP 50kPa D3 V 57.2kPa			1.20 (0.40)	Orangish brown very clayey GRAVEL. Gravels are medium to coarse angular to subangular flints. (HEAD DEPOSIT)		
1.50	D4			1.80 (0.15) (0.15) (0.15)	Dark brown mottled grey slightly gravelly CLAY. Gravels are medium to coarse angular to subrounded flints. (HEAD DEPOSIT)		
1.90 1.90 1.90 2.00 2.00 2.00	HP 125kPa D5 V 130kPa HP 87.5kPa D6 V 88.4kPa			2.00 (1.70)	Orangish brown very clayey GRAVEL. Gravels are medium to coarse angular to subangular flints. (HEAD DEPOSIT)		
2.50 2.50 2.50	HP 112.5kPa D7 V 98.8kPa			3.00 3.00 3.00	Dark brown mottled orange grey silty CLAY. (LONDON CLAY FORMATION)		
3.40 3.40 3.40	HP 100kPa D8 V 101.4kPa			3.50	Complete at 3.50m		

Level Monitoring Stations



Level Monitoring



Item 5

Upcoming Applications

Close

This page is intentionally left blank